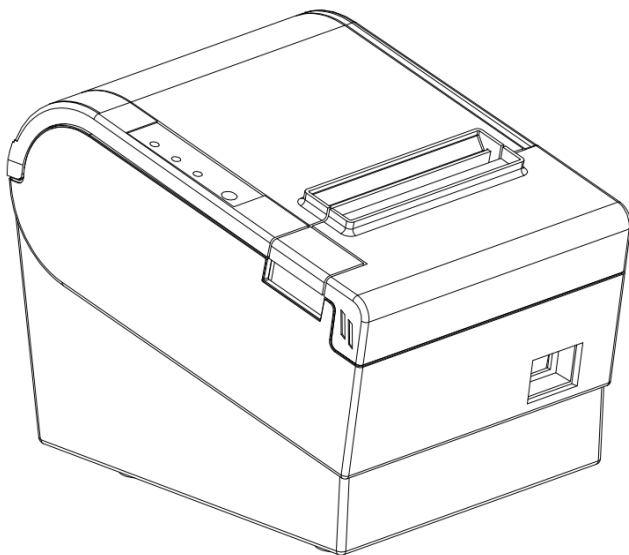


80MM Thermal Receipt Printer User Manual



Please read this manual carefully before using it, and keep it for future reference

About this manual

Thanks for your purchase of our company's 80MM thermal printer. This manual can help you to use this product. Please read this manual before use, and safekeeping, so that all the user of this product can read it.

Note

Due to our constant efforts to improve and upgrade the product's function and performance, our company reserves the right to change the hardware and software specifications in the manual without prior notice.

If you find any errors or missions in the contents of this manual, please tell us or our agent,thank you very much.

Without the prior written permission of our company, the contents of the relevant manual attached to the product shall not be reproduced, transmitted, transcribed, stored, etc..

Statement

This product is type A product, may cause the wireless radio interference in the living environment , in this case,the user need to protect the interference with effective protection measures.

Safety tips

- Do not disassemble the printer personally, pls read this manual before use.
- The printer should be installed in a stable place to avoid damage to the printer due to vibration or shock.

- Do not store and use the printer in the environment of high temperature, high humidity, and heavy pollution.
- The power adapter of the printer should be connected to the grounding socket. Avoid to use the same socket with other large motor or other equipment can lead to voltage fluctuation. Otherwise, it may lead abnormal to printer and even damage to the printer.
- Pls use the standard power adapter to the printer.
- When connect to printer, please make sure the printer is in power off status.
- When the printer is printing, please do not open the paper cover, otherwise it may cause unexpected situation, and even damage the printer.
- After printing, print head is still in high temperature, pls do not touch, to avoid burn.
- Pls do not use dissolved substances, such as: benzene, thinner or alcohol wipe to clean the printer casing. At the same time, please do not use corrosive chemicals and detergent to contact printer. To avoid damage to the printer.
- Pls use our company approved or regular factory produced printing paper, otherwise it may lead to poor print quality, and even damage the printer core.
- How long the letters can stay on the receipt is related to thermal paper quality, if you want to print the long-term preservation bills, please choose a high quality thermal paper.
- The printer is only suitable for using in the altitude below 2000M.
- The printer is only suitable for use in non tropical climates.

Application Area:

- Electronic cash register POS system printing
- Electronic transfer POS system printing
- Sports, postal, civil aviation bill printing
- Query, service system bill printing
- Catering industry bill printing
- Tax bill printing

Package:

- Printer 1PC
- Standard power adapter (including power line) 1SET
- Paper roll 1ROLL
- Data line 1PC
- User manual 1PC
- Driver CD 1PC

Printer Features:

- High-speed printing, improve the printing efficiency
- Excellent waterproof, anti - oil, anti-dust structure design
- Support wall hanging function, meet the special environment printing
- Support 80MM large diameter paper roll
- Support kitchen printing and Internet printing
- Support printer monitoring function, to avoid losing bills
- Using 100M Ethernet card, connect printer faster, to avoid losing bills
- Recover printing after network disconnection, to avoid losing bills
- Support LOGO Graphical download and print
- Support 1D, 2D bar code printing
- Support order come remind and error alarm
- Support Multi-language printing
- Standard GB18030 large character library;

80MM Thermal Receipt Printer User Manual

- Support multi-language printing;
- Rich interface optional;
- Compatible with ESC/POS print command mode;
- Support Windows, Linux, Android and IOS system printing;

Printer Parameters:

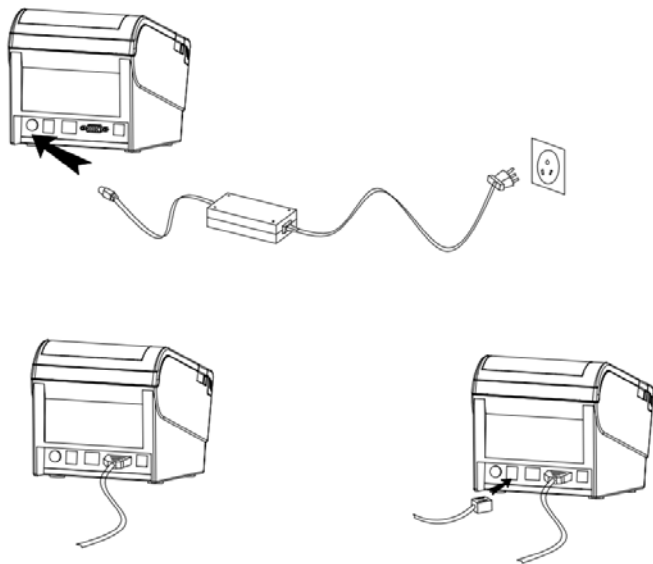
Item		Parameters
Print parameters	Printing	Thermal Line
	Printing	72mm
	Resolution	576 Dots/Line or 512 Dots/Line
	Print	160-220mm/S,300mm/S(Max)
	Line	3.75mm (Can adjust line spacing by
	Line No.	FontA-48Lines/FontB-64Lines
	Character	Standard GB18030 simplified / traditional
	Character	ANK character
	Extended character set	PC437/Katakana/PC850/PC860/PC863/PC865/WestEurope/Greek/Hebrew/East Europe/Iran/WPC1252/PC866/PC852/PC858/IranII/Latvian/Arabic/PT151,1251/PC737/WPC/1257/ThaiVietnam/PC864/PC1001/(Latvian)/(PC1001)/(PT151,1251)/(WPC1257)/(PC864)/(Vietnam)/(Thai)
	Bar code	UPC-A/UPC-E/JAN13(EAN13)/JAN8(EAN8)/CODE39/ITF/CODABAR/CODE93/CODE128
	Graphics	Supports bitmap download and print
Cutter	Cutter	Full cut/Half cut

80MM Thermal Receipt Printer User Manual

Paper	Type	Thermal Paper
	Width	79.5±0.5mm
	Diameter	≤82mm
	Feed	Easy feed(Clameshell feed)
Print commands		ESC/POS
Power	Power Adaptor	Input: AC 110V-240V,50 ~ 60Hz
	Cash Drawer	DC 24V/1A
Buffer	Input	2048K bytes
	NV Flash	256K bytes
physical characteristic	Weight	1.2KG
	Dimension	186*145*133(MM)
Environment	Working	Temp: 5 ~ 45 °C Humidity: 10 ~ 80%
	Storage	Temp: -10 ~ 50 °CHumidity: 10 ~ 90%
Reliability parameter	Cutter Life	1000,000times
	Print Head	100KM (print density≤12.5)
Software	Driver	Android,IOS,Linux,Windows

Printer connection

1. Connect the power adapter cable with printer.
2. Connect the data cable(eg: USB line) with printer also.
3. Connect Cash drawer line with printer as well.

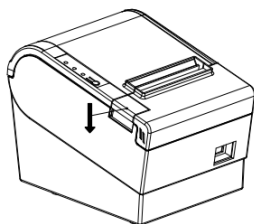


Install thermal paper

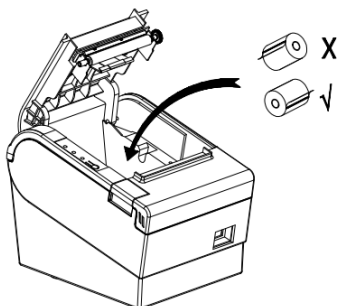
80MM series thermal printer using 80MM thermal paper, using easy paper structure, convenient to install paper.

- 1 Pressing down the opening button, open the printer cover
- 2 Put thermal print paper in the paper holder according to the pic below
- 3 Pull a little paper out of the warehouse
- 4 tear excess printing paper

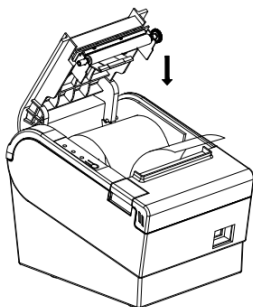
①



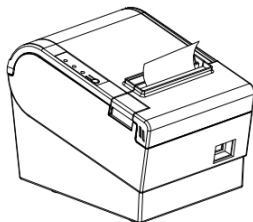
②



③



④



Note: take care of the roll direction, if reverse direction, the content won't be print out.

Power switch, press bottom, indicators and their functions

1 Power switch button

The switch can turn on and off the printer power supply.

2 Feed button

Press this button can feed the paper out, if keep pressing, will continue to feed.

3 Paper light indicator

When this paper light and the Error light flashing at the same time, it indicates printer is lack of paper; When this paper light and the Error light are off, means the printer has paper.

4 Power light indicator

This light on indicates that the printer is connected to the power supply, this light off indicates that the printer power is off.

5 Error light

When Lack paper in printer ; or cutter have problem; or the print head is overheated; or the cover is not closed properly, this error indicator will flash.

How to print a self test page

Connect printer with the power adapter, turn on power bottom and press feed button at the same time, keep pressing the feed button until the paper light turn off and then release the feed button, you will see a self test page printed. In self test page, it shows the current printer status and setting details.

How to set the beep function close or open

Connect printer to the power adapter, turn on power bottom and press feed button at the same time, keep pressing the feed button until the Paper light and error light all turn off, then release the feed button, then you will see the beeper have been set closed / opened.

How to set printing density

Connect printer to the power adapter, turn on power bottom and press feed button at the same time, keep pressing the feed button until the Paper light and error light all turn off, and paper light turn on, then release the feed button, then you have set the printing density successfully.

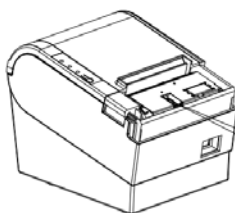
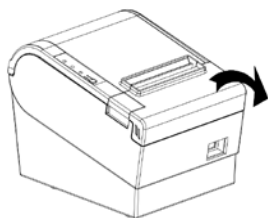
How to back to factory setting:

Connect printer to the power adapter, turn on power bottom and press feed button at the same time, keep pressing the Feed button until the Paper light and error light all turn off, and paper light and error light turn on again, then you will see printer print "Factory Mode set, please restart the printer." Now you can release button and restart the printer, then you back to factory setting.

Cutter stuck maintenance

Method 1: Press the power switch to turn off the printer, then turn it on again to return the cutter.

Method 2: Open the front cover of the printer, turn the gear on the print mechanism, and make the cutter back to the initial position. Then Open the Paper cover and install paper roll then we can print normally.



If the cutter has been locked during paper cutting, Please turn this knob to clean a paper jam.

Note: do not open the cover by force, or may cause unrecoverable damage to the print head and the cutter.

Printer driver

80MM series thermal printer driver mode has two kinds, one is using the port for directly printing, the other is install driver in Windows system to print.

1.port direct drive

In this way, do not need to install the driver, only need to output the character (commands and data) directly to port, and to achieve

character conversion printing by printer inner hard font library. Using port directly drive, make the print control more convenient.

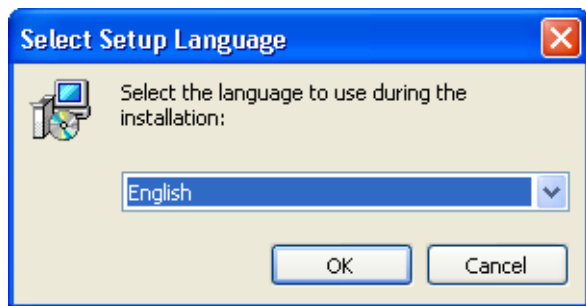
If you use port direct drive mode, you need to use the print command set to control the printer's printing, 80MM series thermal printer has integrated the ESC/POS instruction set.

2. Install driver in windows system

To install the driver in CD under windows, you only need to call the driver in the program to achieved print. In this way, in fact there is a Windows driver to turn the character into a graphic dot matrix way to print.

Windows driver installation steps and instructions:

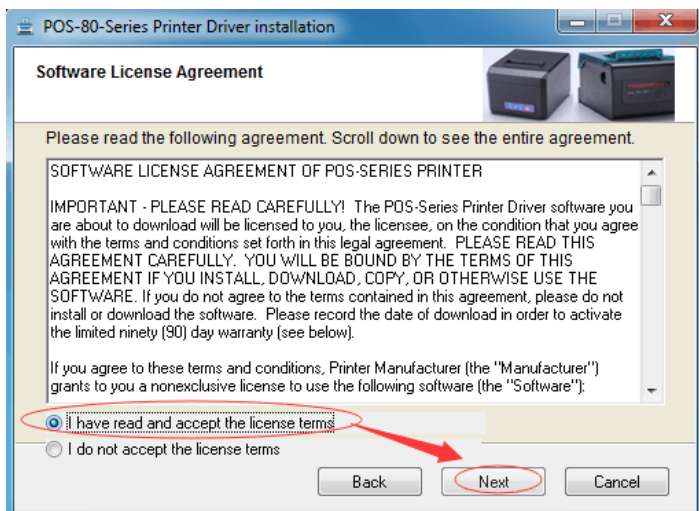
- (1) Open the driver install file "POS-80-Series.exe", click "ok"



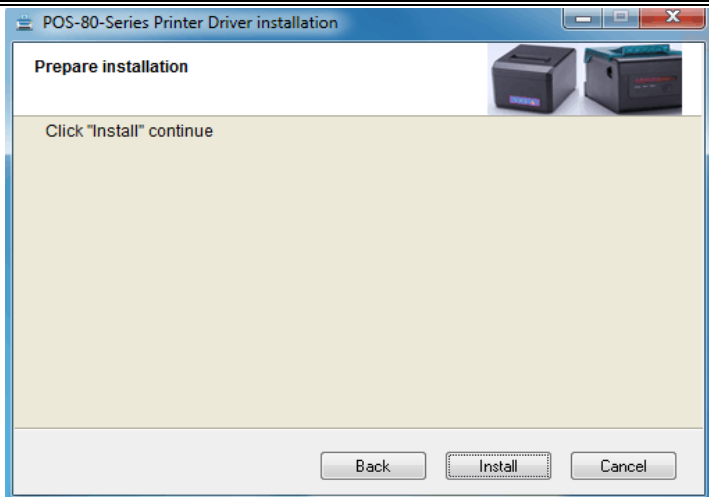
- (2) Click the "next step"



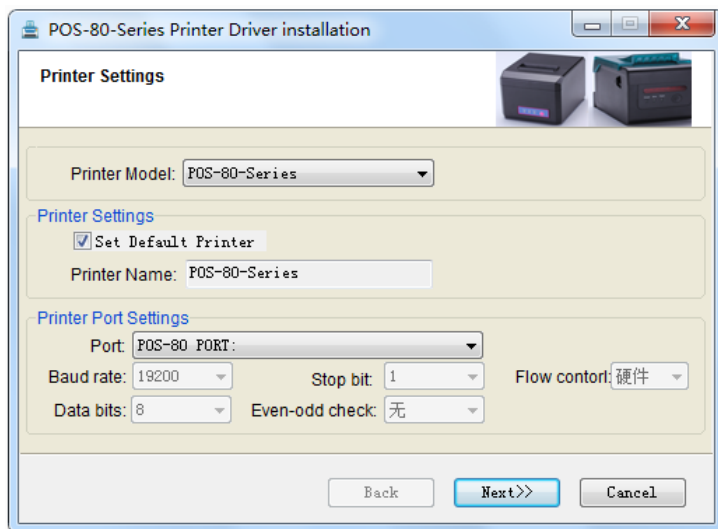
(3) Select "I accept this Agreement", click "next"



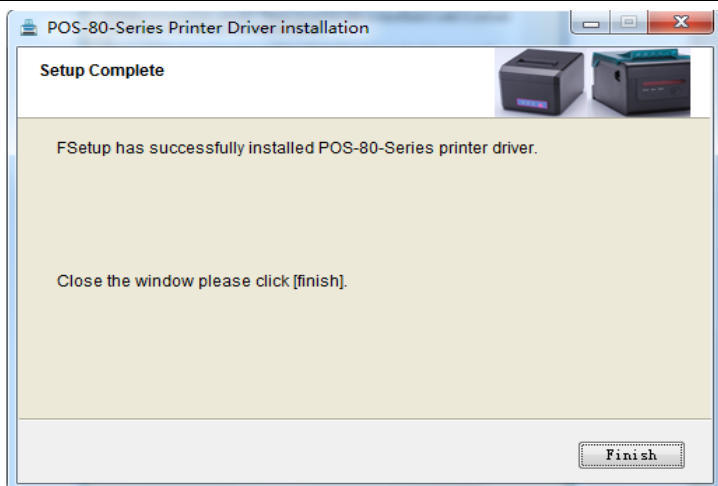
(4) Click "install"



(5) Setup software will automatically identify the version of the Windows system, click "Next"

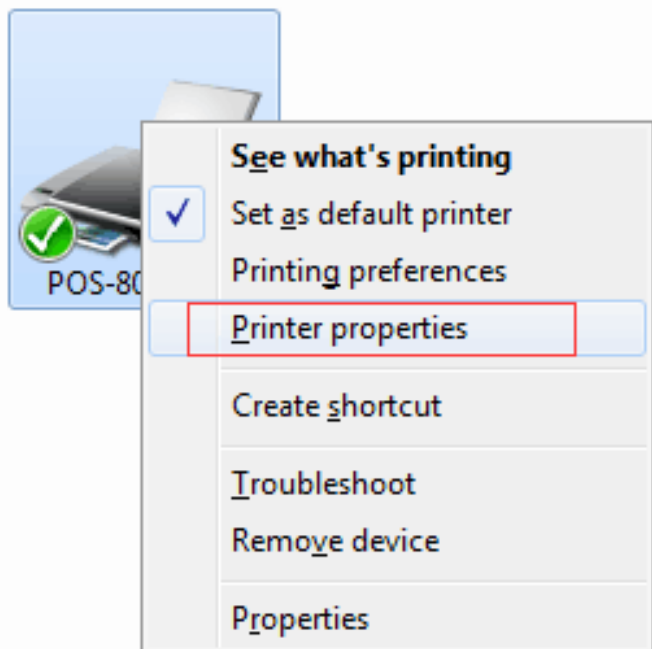


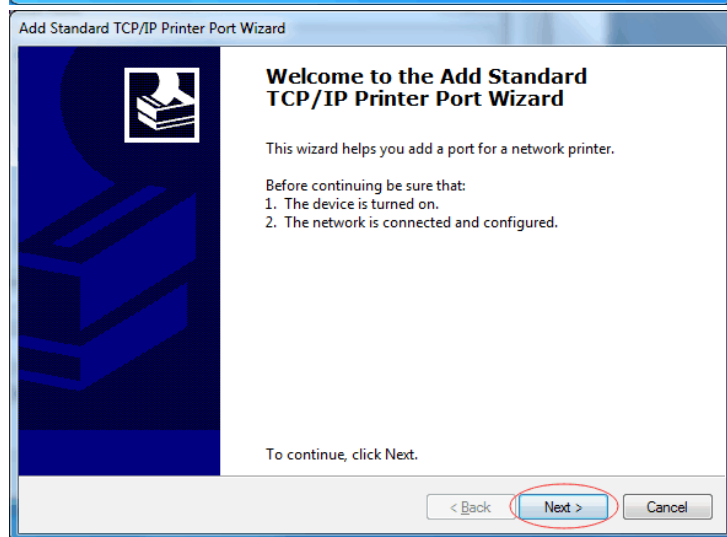
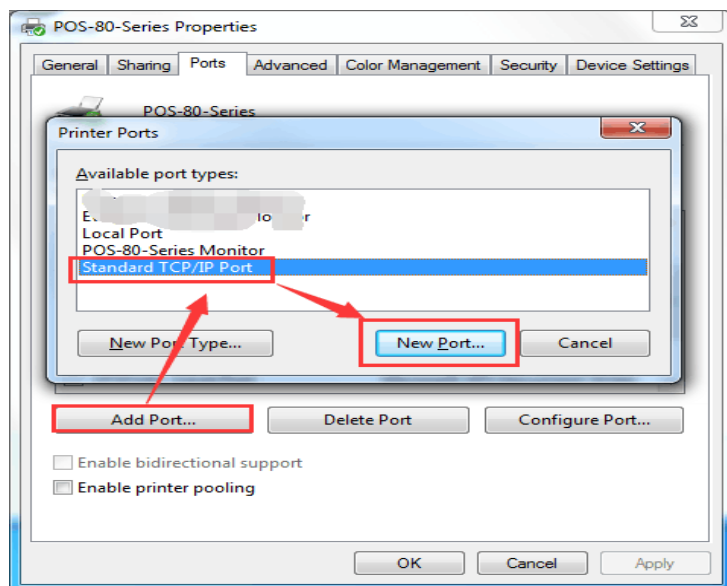
(6) Click "finish" to complete the driver installation. After this step completed, mean the driver have been installed successfully



For Ethernet Port printing, pls check the following Guide.

After you have set Ethernet parameter by Hoin "Lan port setting tool" of CD with your computer, you still need to add the Ethernet port in your computer. Pls find POS-80-Series, right click it and choose the Printer Properties and add the new Ethernet port in the port list. The Exact adding way show as following pictures.





80MM Thermal Receipt Printer User Manual

Add Standard TCP/IP Printer Port Wizard

Add port
For which device do you want to add a port?

Enter the Printer Name or IP address, and a port name for the desired device.

Printer Name or IP Address: → Printer's IP address

Port Name: ↘ the port name you can define.

< Back **Next >** Cancel

Add Standard TCP/IP Printer Port Wizard

Additional port information required
The device could not be identified.

The device is not found on the network. Be sure that:

1. The device is turned on.
2. The network is connected.
3. The device is properly configured.
4. The address on the previous page is correct.

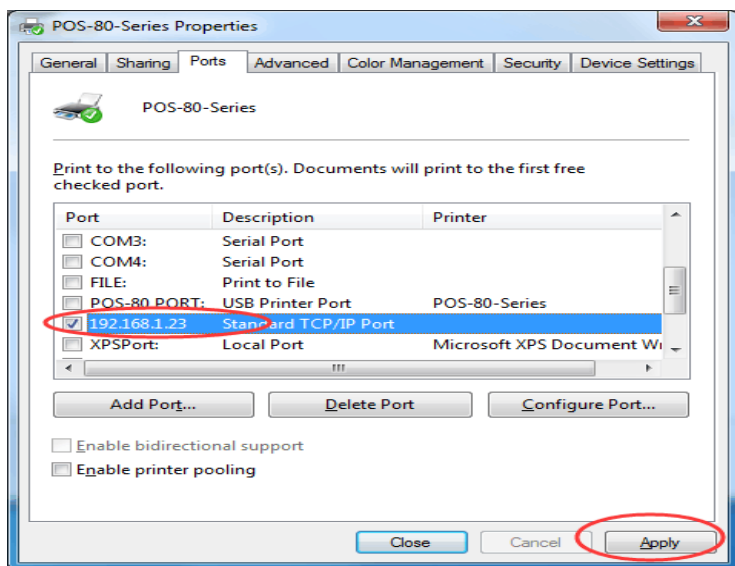
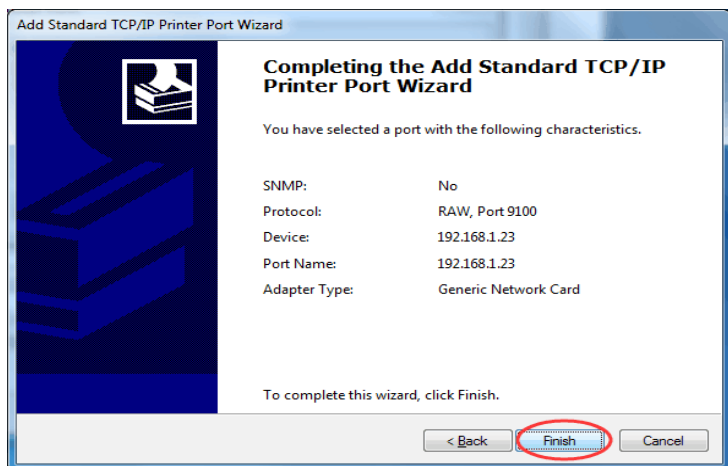
If you think the address is not correct, click Back to return to the previous page. Then correct the address and perform another search on the network. If you are sure the address is correct, select the device type below.

Device Type

☒ Standard v

☐ Custom

< Back **Next >** Cancel



Printer Repair and maintenance

1. printer external and warehouse cleaning: please use a wet cloth gently wipe the printer surface and internal paper warehouse.
2. Printer core clean: printer core must be clean on time, especially the quality of printing is decline, cleaning methods are as follows: put cotton dipped in anhydrous alcohol and gently wipe the printer core ceramic parts as shown in the picture below until clean enough.
- 3.If find water inside printer, pls immediately disconnect the printer power, and dry the printer naturally.

Failure Analysis:

Failure phenomenon	Failure cause	Solution
Printer paper light and Error light flashing at same time,and make a Di Di... beep sound	Printer lack of paper	Install paper correctly
Printer error light flashing and make a Di Di...beep sound	1,The printer cutter problem. 2.The printer head is overheated 3. The cover not closed well	1,Pls follow the "Cutter stuck maintenance" schedule above to solve. 2,Open the cover and dissipate heat fully then go on printing. 3. Confirm Cover Closed well

80MM Thermal Receipt Printer User Manual

When printing, only paper running but no print	Thermal paper install reverse	Pls install the paper in a opposite direction
The printer print fuzzy	The print head not clean for a long time	Put cotton dipped in anhydrous alcohol and gently wipe the printer core ceramic parts until clean enough
	The thermal paper is not good	Pls choose high quality thermal paper
There is no response on printer	The power adaptor not connected	Pls check power adaptor is connected well and power switch is on.
Printer can self test, but can not print online	Driver port selection error	Pls select the correct print driver port based on the actual connection port
Printer serial port does not print or print garbled	Bit rate selection error	Pls set the COM baud rate according to the COM info on self test page